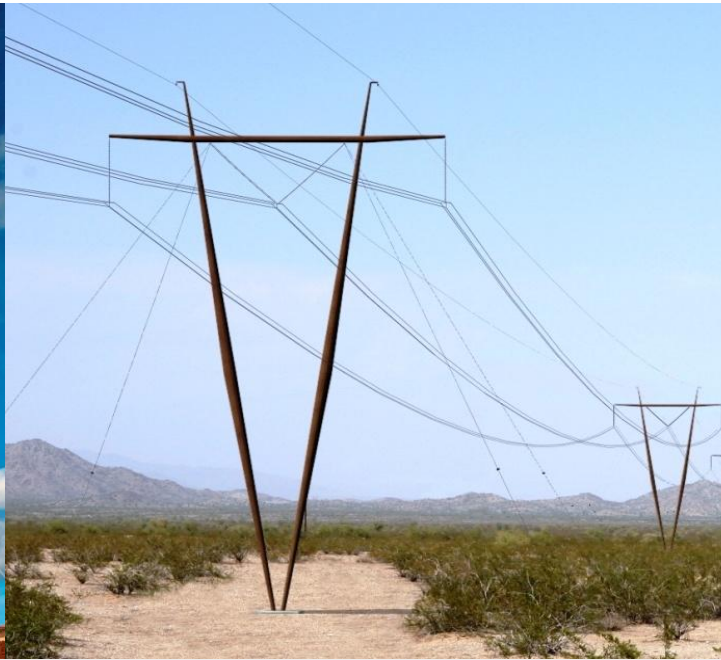


AWEA WIND & TRANSMISSION WORKSHOP

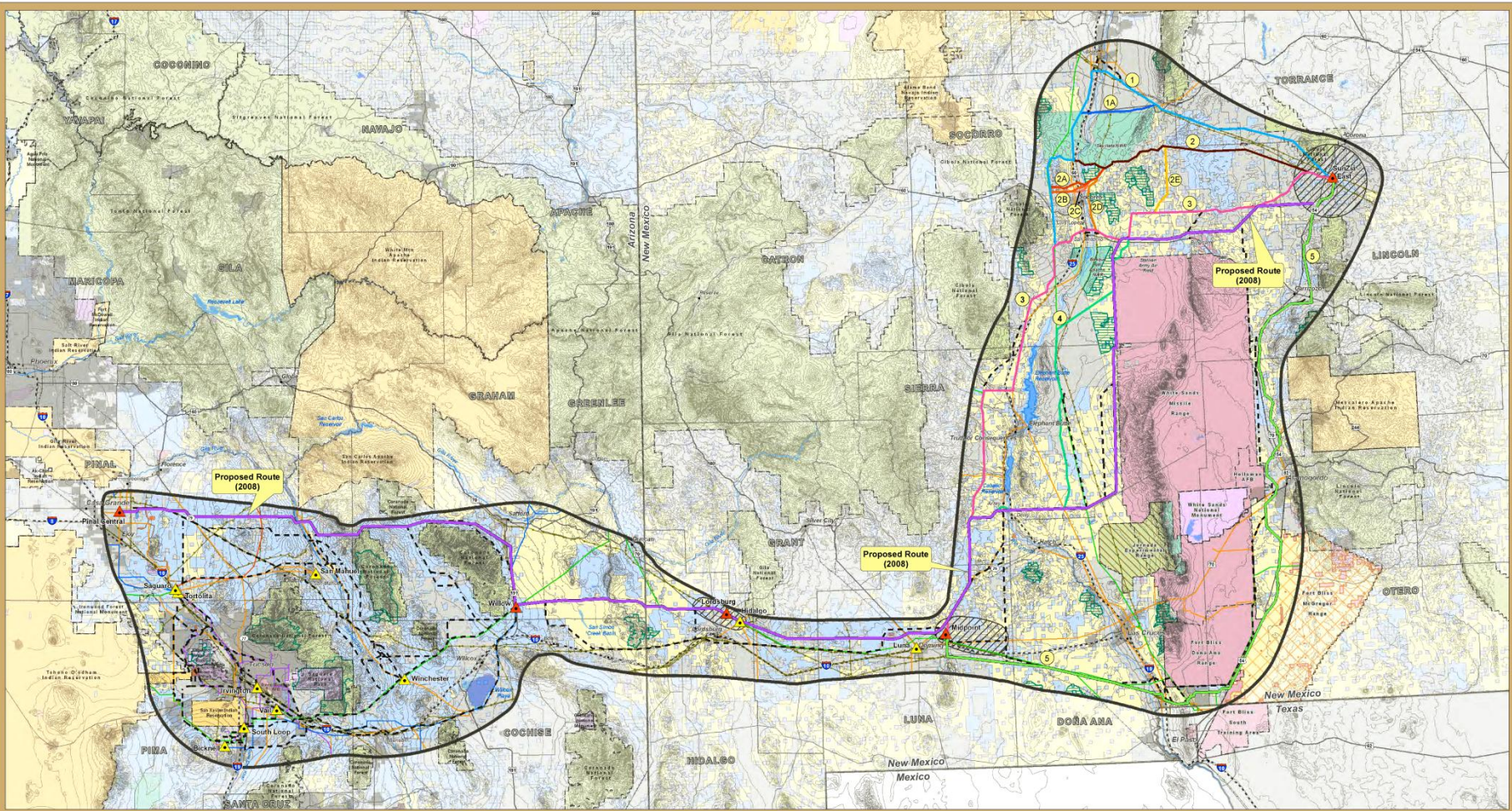
SESSION: INFRASTRUCTURE DEVELOPMENT~WEST

SUNZIA SOUTHWEST TRANSMISSION PROJECT



TOM WRAY
PROJECT MANAGER

FEBRUARY 10, 2011



SunZia Southwest Transmission Project
Land Ownership and Jurisdiction



LEGEND

Land Ownership

- | | |
|---------------------------|--------------------------------|
| Bureau of Land Management | U.S. Fish and Wildlife Service |
| U.S. Dept. of Defense | U.S. Bureau of Reclamation |
| McGregor Range Withdrawal | Indian Reservation |
| National Park Service | State Trust Land |
| U.S.D.A. Forest Service | Local or State Parks |
| U.S.D.A. Other | Private/Other |

Base Features

Project Features

- | | |
|---------------------------------------|-------------------------|
| SunZia Proposed Route - Sept. 8, 2008 | Study Area - April 2010 |
| Alternative Route Segments | Substation Siting Area |

Alternative Routes - Midpoint to SunZia East

- | | | |
|----|----|---|
| 1 | 2B | 3 |
| 1A | 2C | 4 |
| 2 | 2D | 5 |
| 2A | 2E | |

Utilities

- | | |
|-------------------------|-------------------------------|
| Proposed Substation | 500kV Transmission Line |
| Existing Substation | 345kV Transmission Line |
| Pipeline (Diameter 6"+) | 230kV Transmission Line |
| | 138kV/161kV Transmission Line |
| | 115kV Transmission Line |

Reference Features

- | | | |
|----------------|---------------|-----------------------------|
| City | State Highway | County Boundary |
| River/Stream | U.S. Highway | State Boundary |
| Lake/Reservoir | Interstate | Jurisdictional Boundary |
| Urban Area | Railroad | Wilderness Area |
| | | Wilderness Study Area (WSA) |

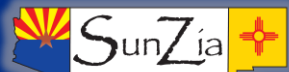
Sources:

- AZ BLM 2009
- AZ State Land Department and ALRIS 2008
- ESRI StreetMap 2008, Mimbres RMP 1989
- NM BLM 2009, Socorro PRMP 2009
- Tri-County RMP 2009
- POWERmap, powermap.platts.com
- ©2009 Platts, a Division of the McGraw-Hill Companies
- USGS, EPO, Inc. 2010

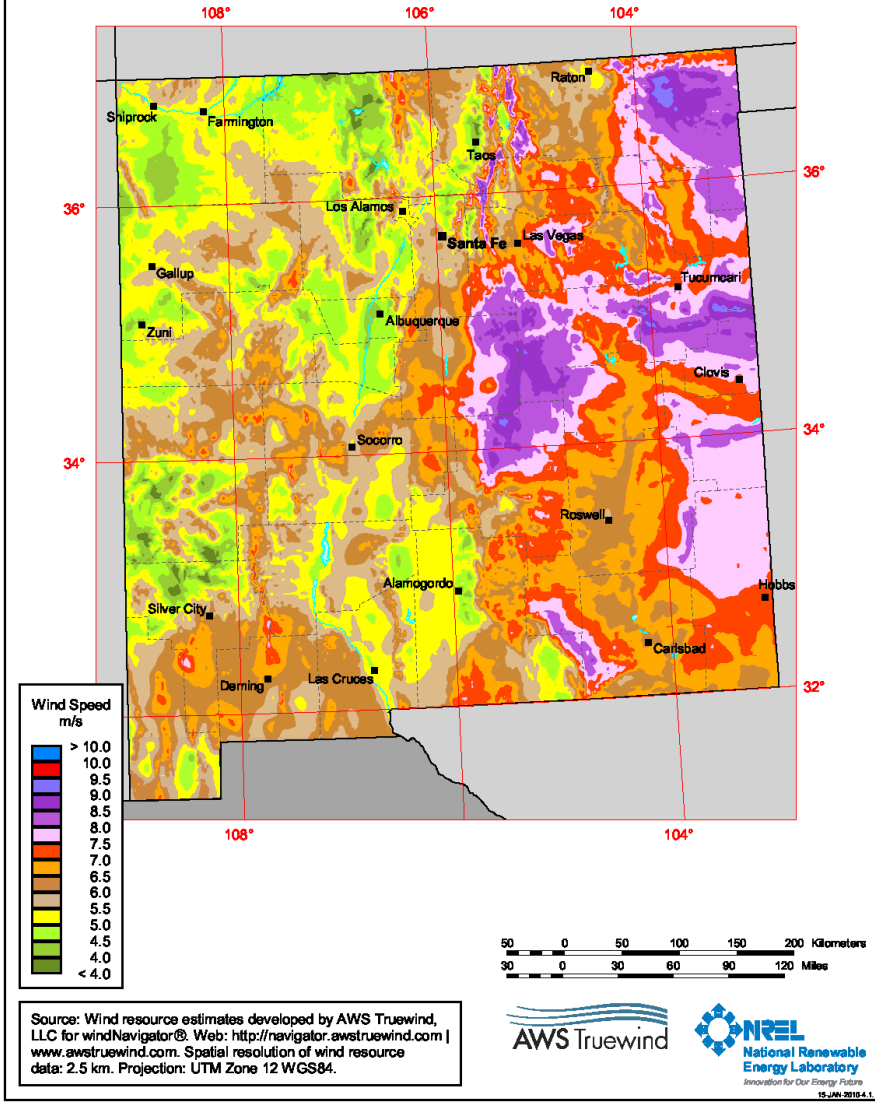


Contour Interval 200 feet

May 12, 2010

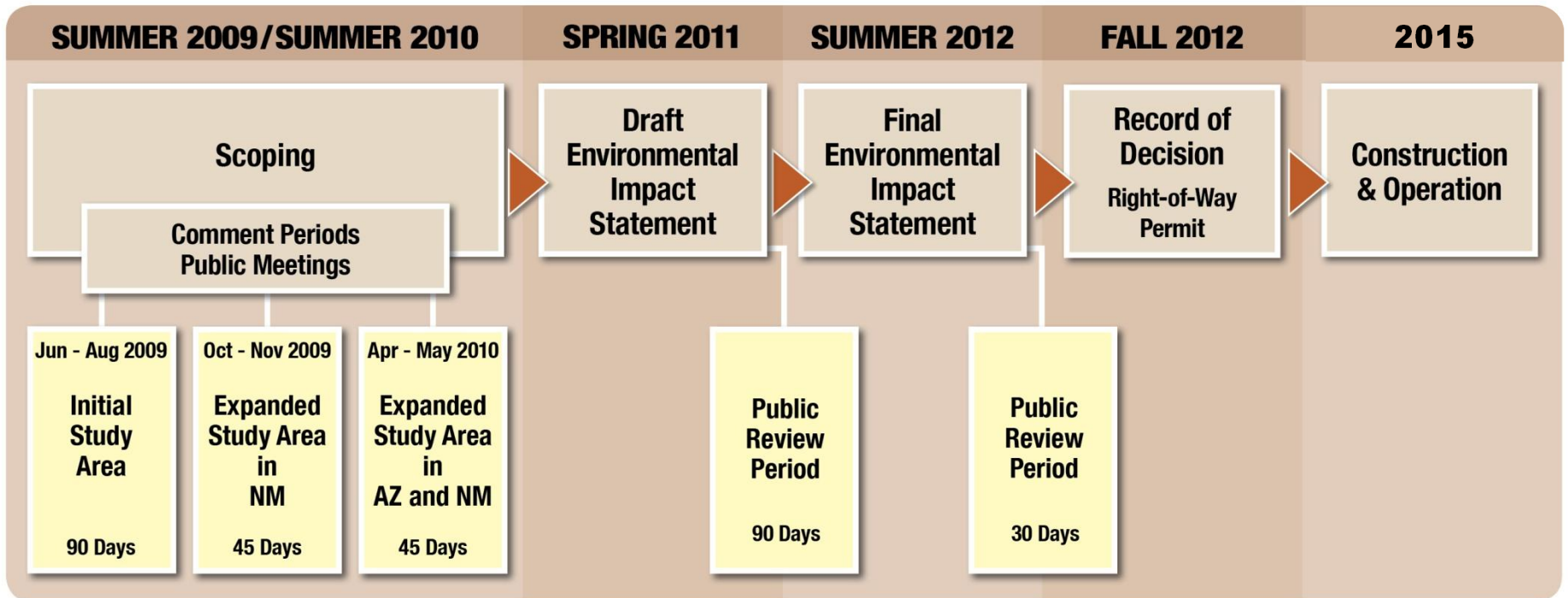


New Mexico - Annual Average Wind Speed at 80 m



EIS SCHEDULE

PROJECT TIMELINE



A horizontal banner image featuring a blurred background of solar panels on the left and several wind turbines on the right, set against a light blue sky. The text 'WWW.SUNZIA.NET' is overlaid in the center.

WWW.SUNZIA.NET